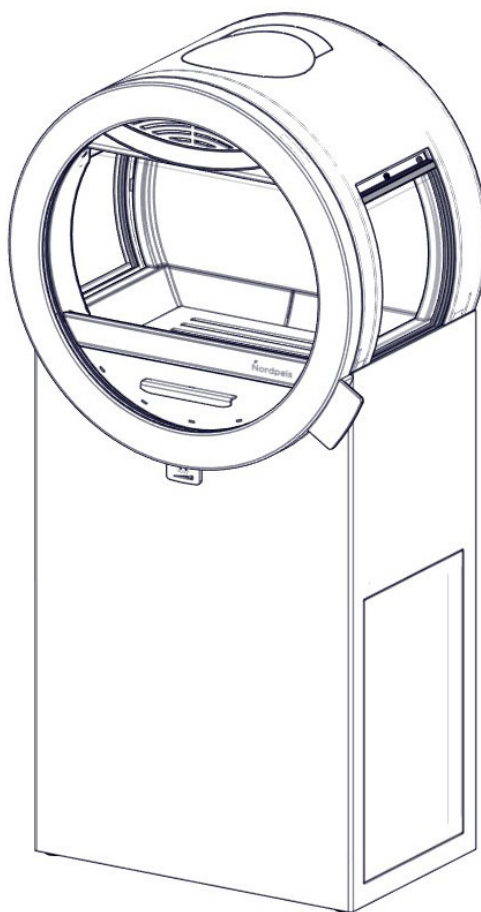


- ⓃO Monterings- og bruksanvisning
- ⓈE Installations- och bruksanvisning
- ⓖB Installation and user manual
- ⓕI Asennus ja käyttöohje
- ⓊE Installations und Benutzerhandbuch
- ⓕR Manuel d'installation et d'utilisation
- ⓊK Installations- og brugervejledning



Me Basic

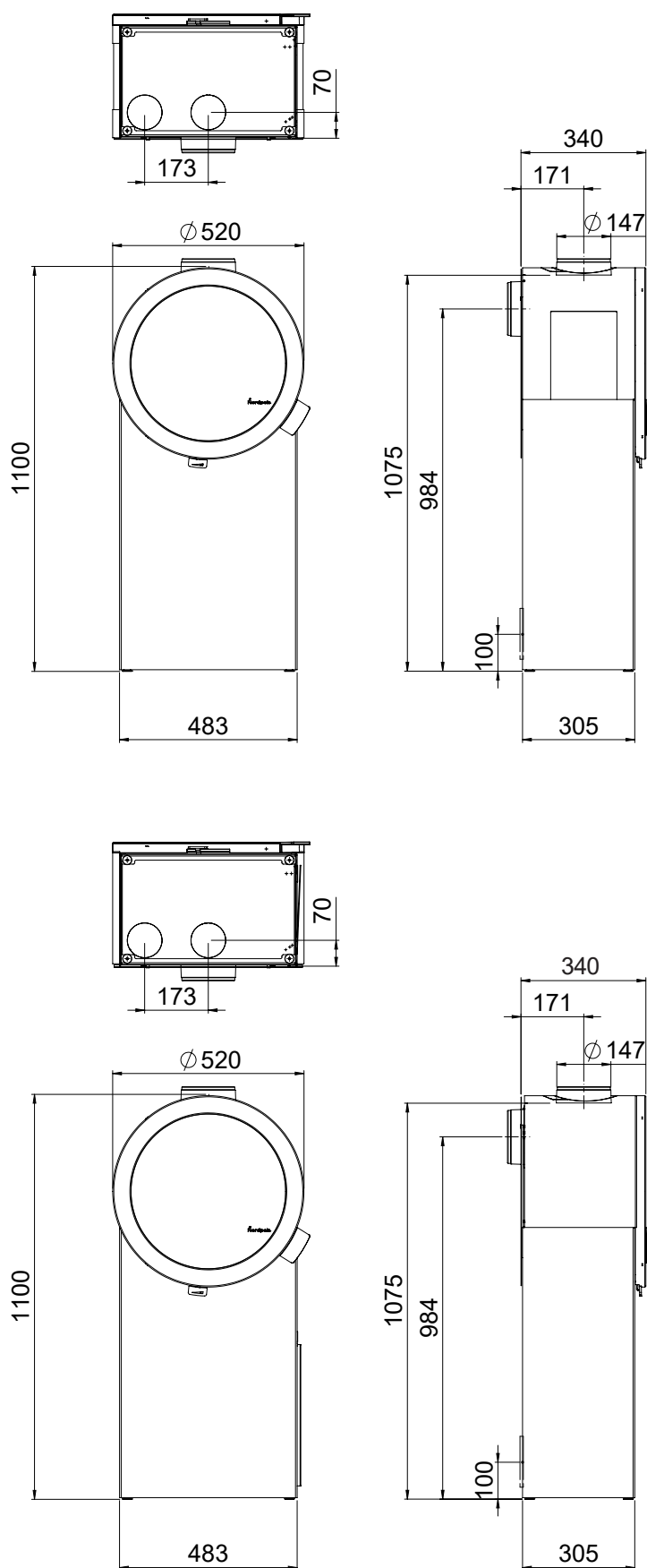
Art.no: SA-ME000-B14, SA-ME000-B24

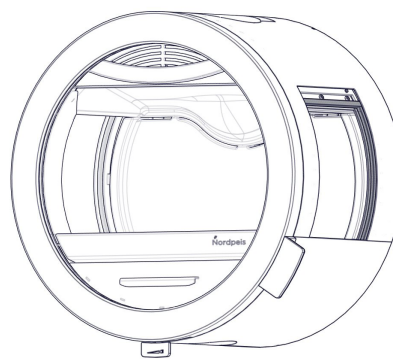
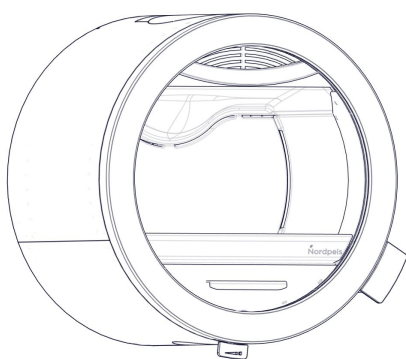
Last updated: 08.12.2020

Test Report No: RRF 40 17 4683, NS 17 4683

FIG 1

Me Basic = mm / air / chimney





Manual for ME



Se egen monteringsanvisning

See separate instruction

Se egen monteringsanvisning

Katso erilliset ohjeet

Beachten Sie die separate Montageanleitung

Voir le manuel d'installation séparé

Se separat instruktion

- (NO)** Se monteringsanvisningen til ME og fjern Thermotteplatene fra brennkammeret.
- (SE)** Se monteringsanvisningen för ME och ta bort thermotte-infordringen.
- (GB)** Refer to the installation manual for ME and remove the Thermotte liner.
- (FI)** Katso ME-asennusohje ja irrota Thermotte-levyt.
- (DE)** Siehe die ME-Einbauanleitung und entfernen Sie den Thermotte-Mantel.
- (FR)** Reportez-vous au manuel d'installation du modèle ME et retirez l'habillage en Thermotte.
- (DK)** Se installationsvejledningen til ME, og fjern Thermotte-foringen.

FIG 2

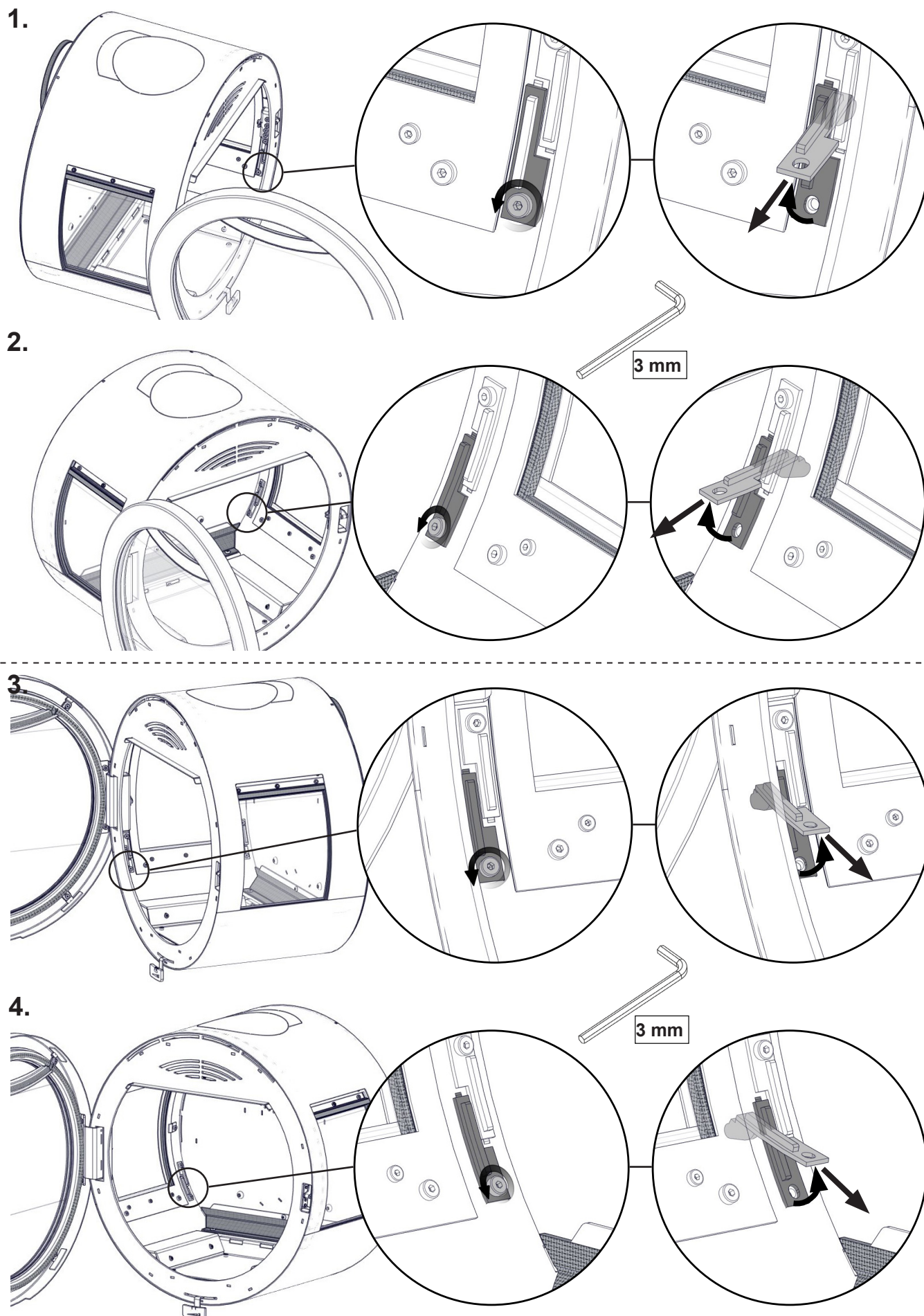


FIG 3

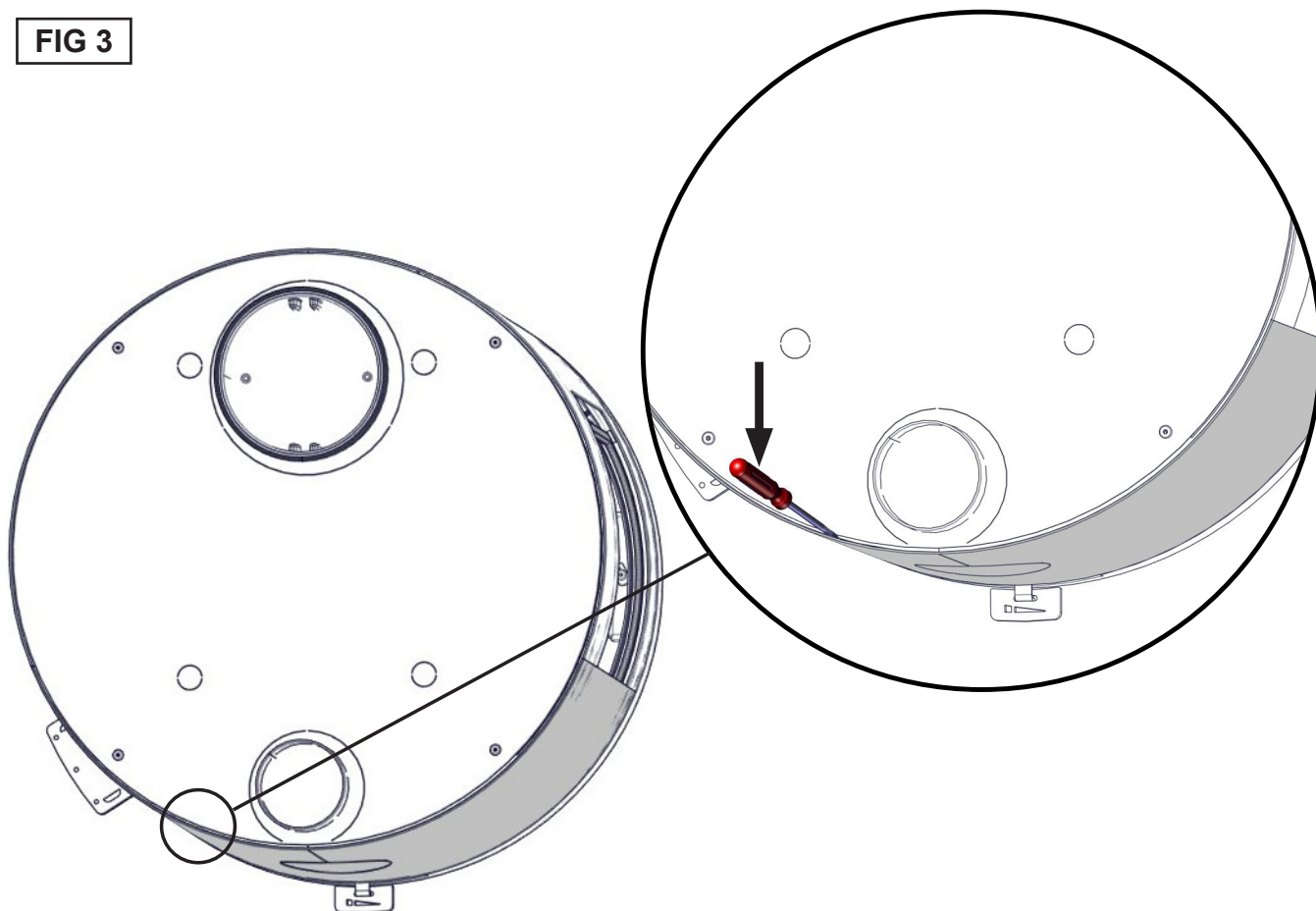


FIG 3a

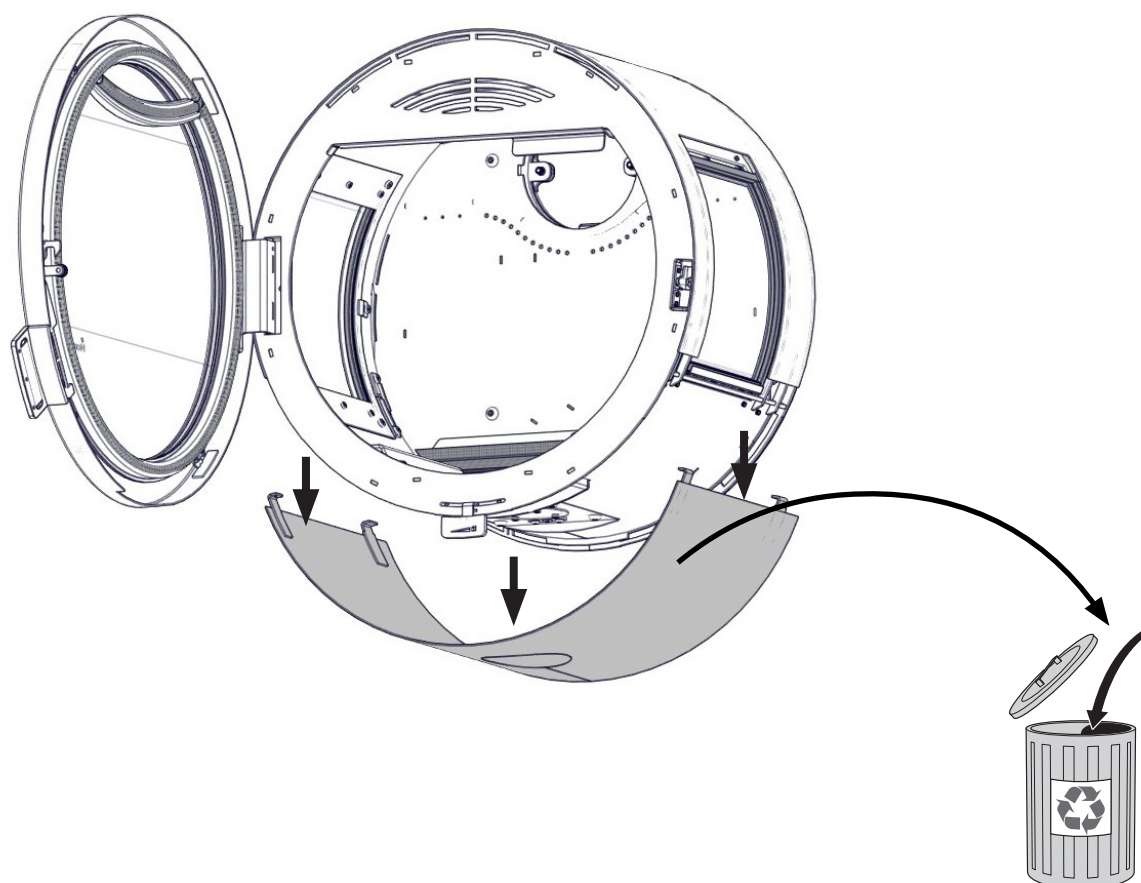


FIG 4

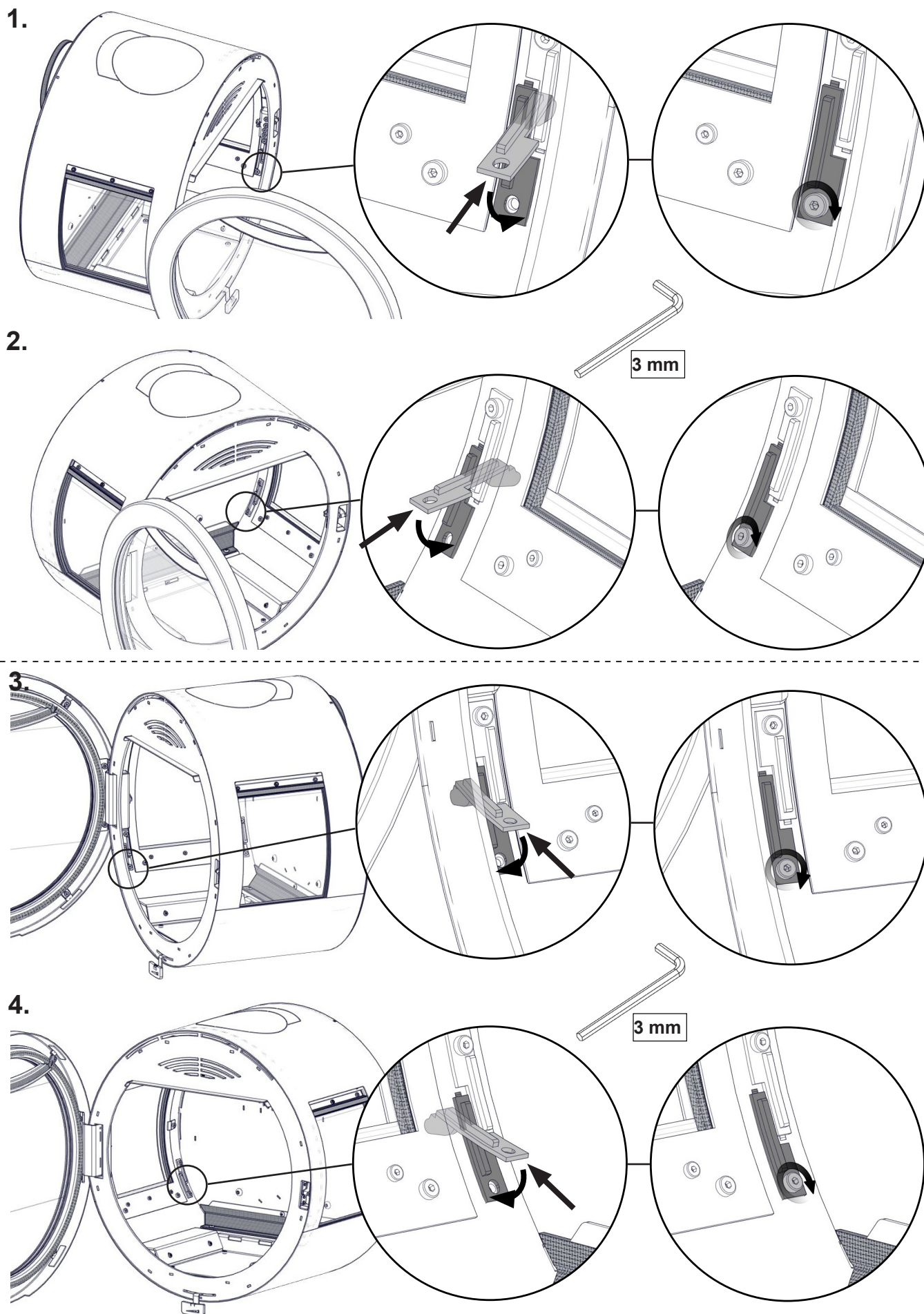


FIG 5

Nedre luftstilkobling / Undre luftanslutning
Bottom air connection / Palamisilmaliitäntä pohjassa
Unterer Luftanschluss / Raccordement d'air par le bas
Nederste lufttilkobling

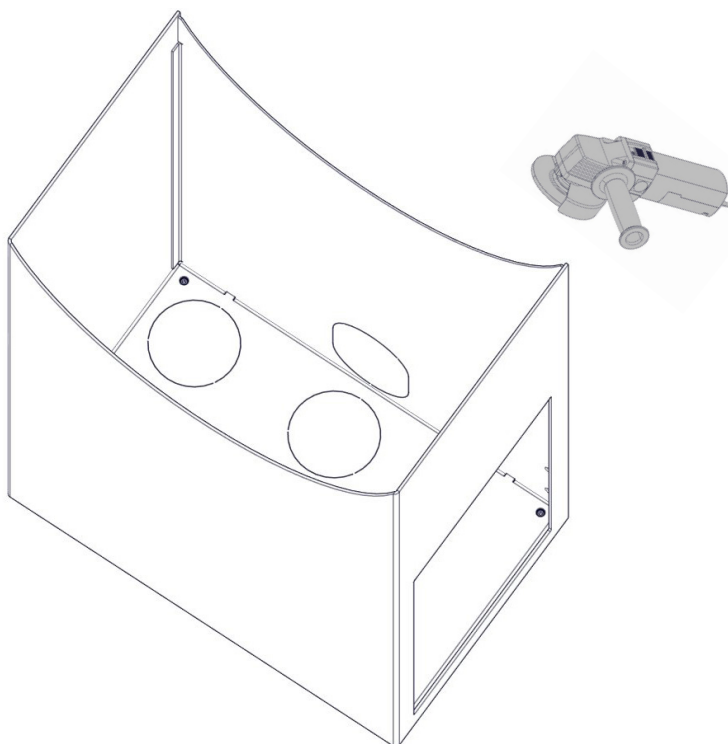


FIG 6

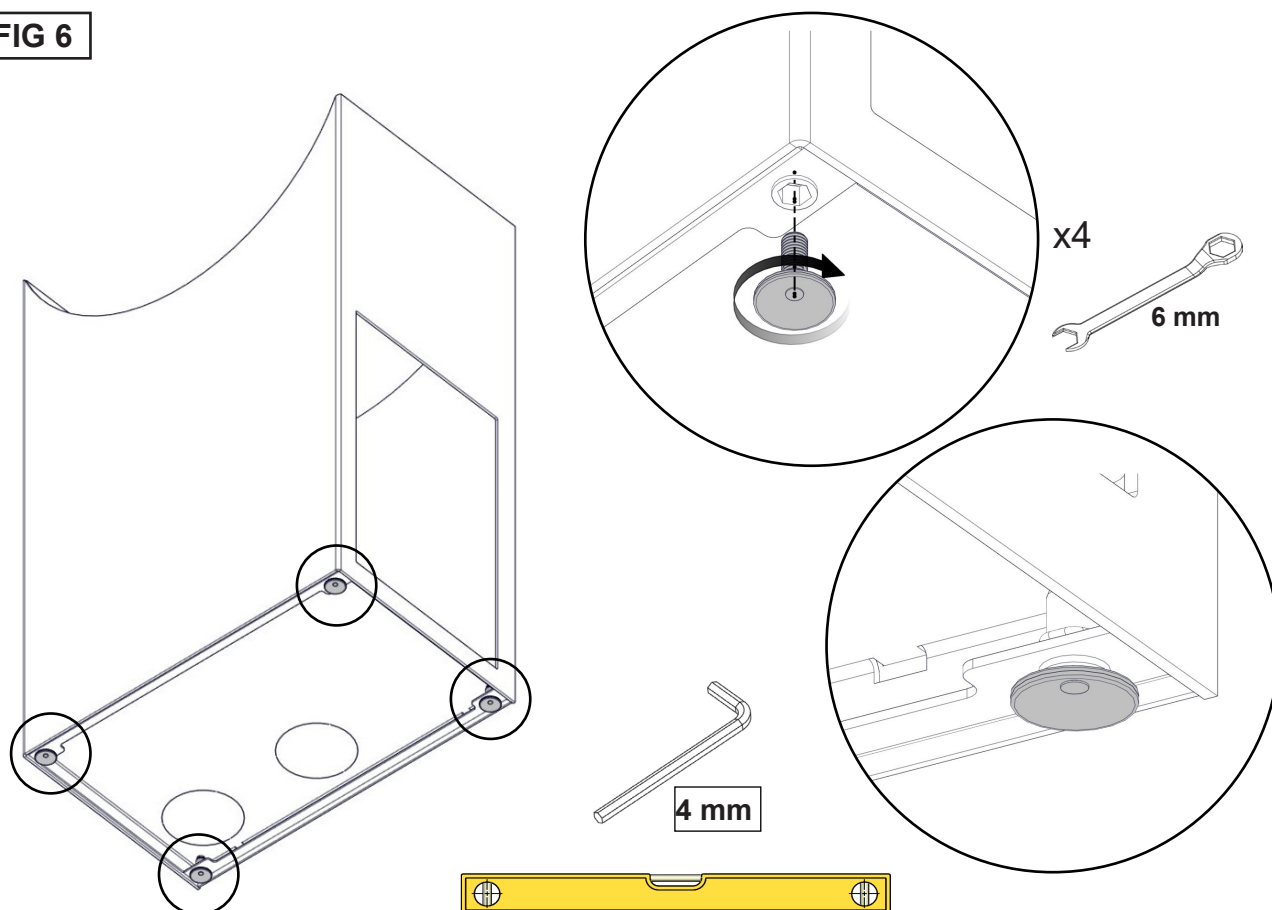


FIG 7

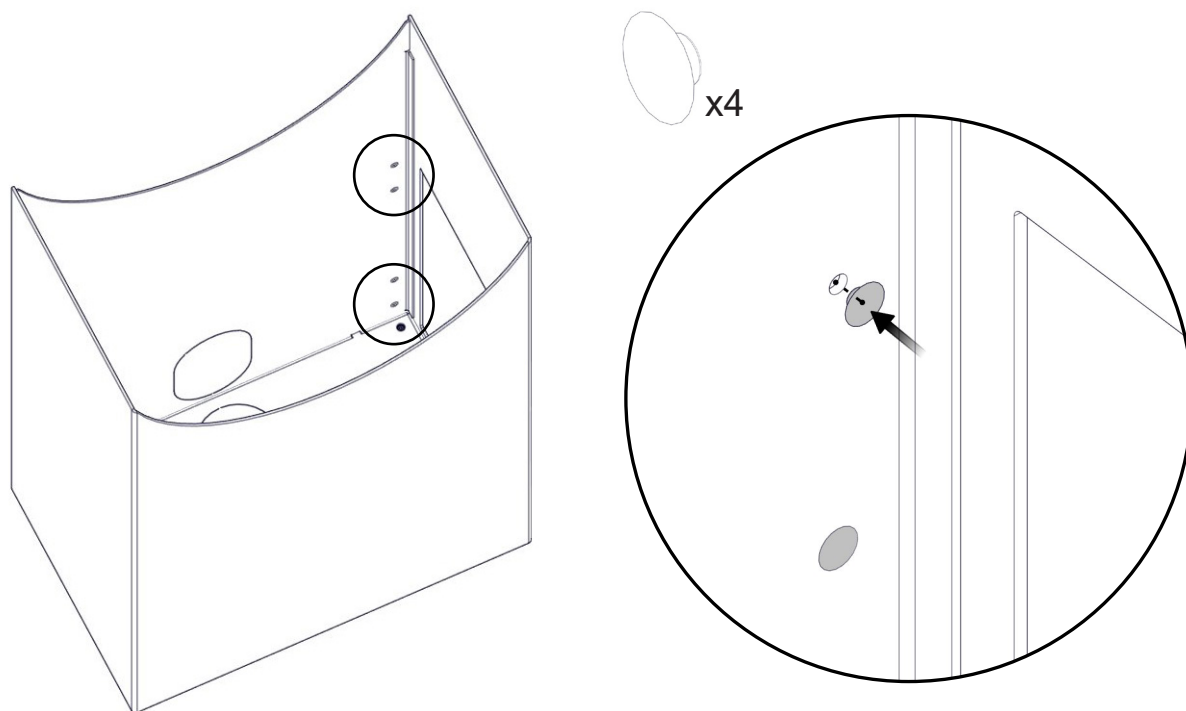


FIG 8

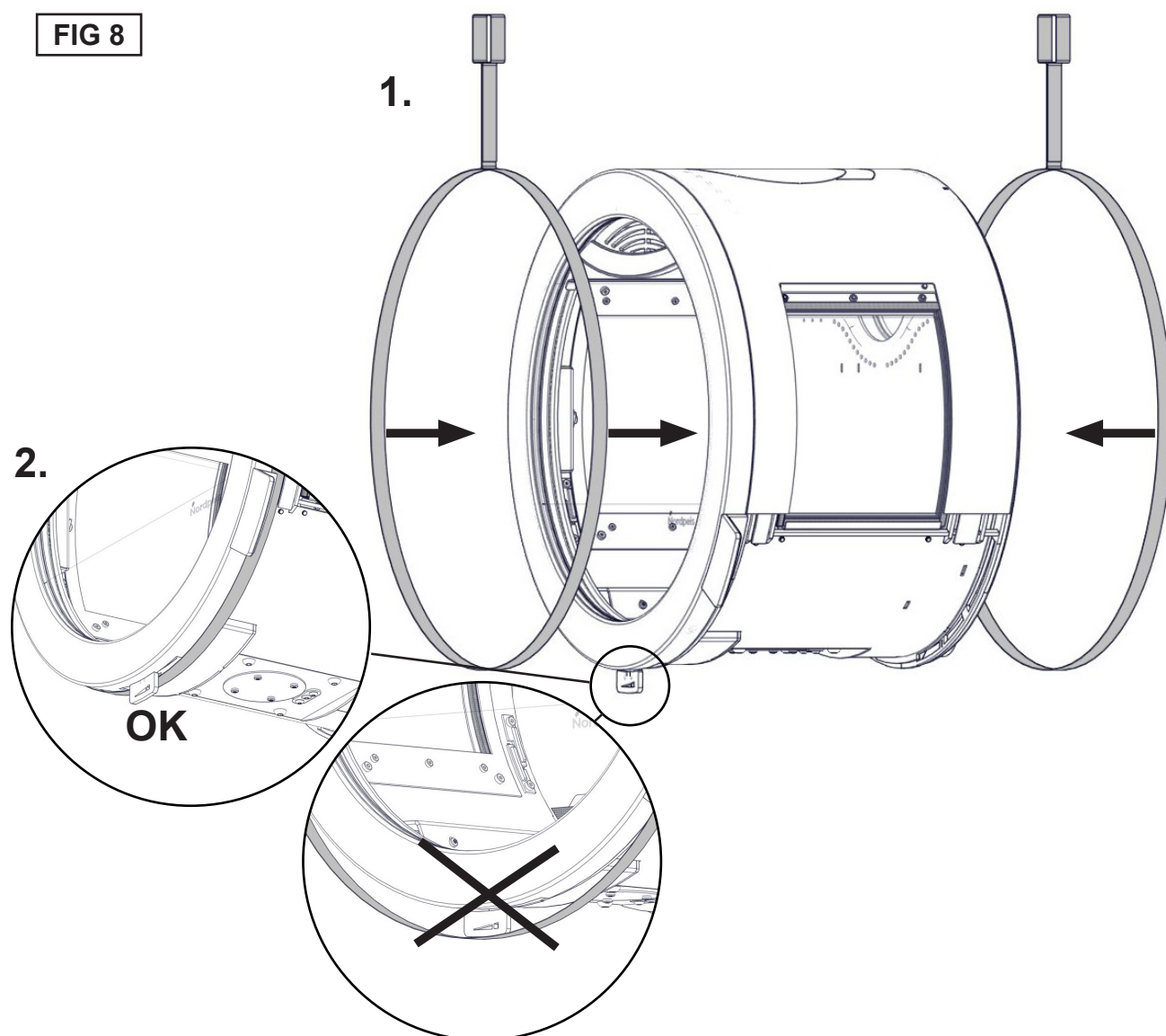


FIG 8a

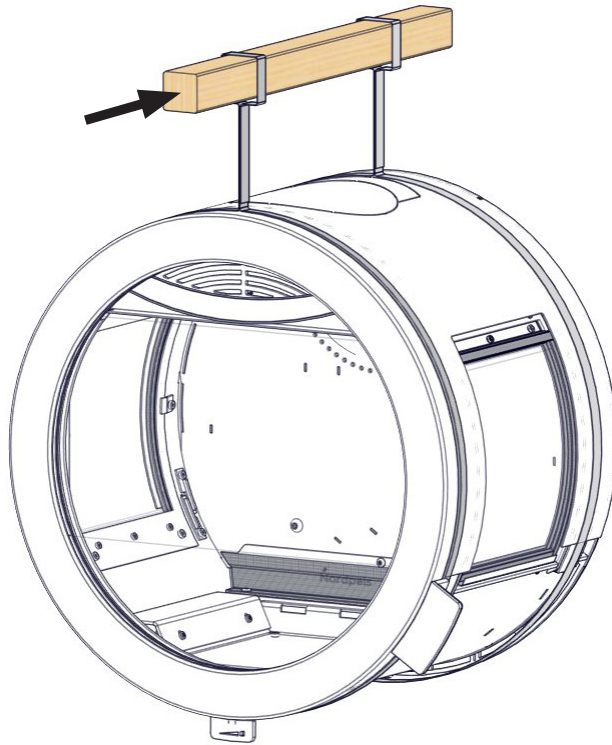


FIG 9

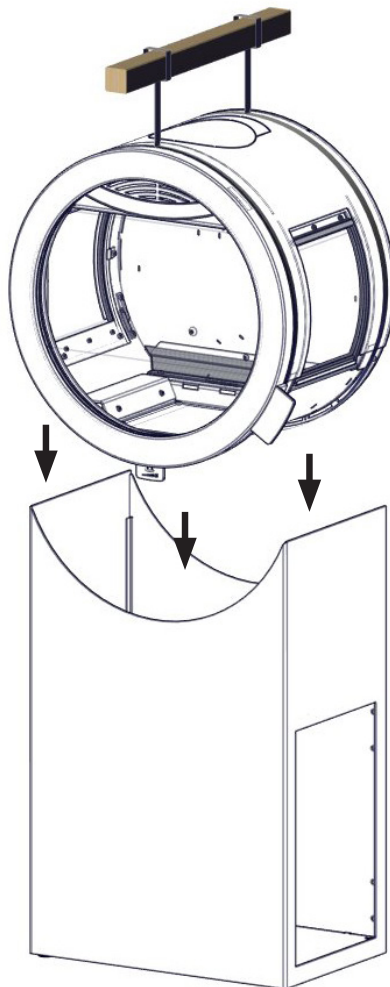
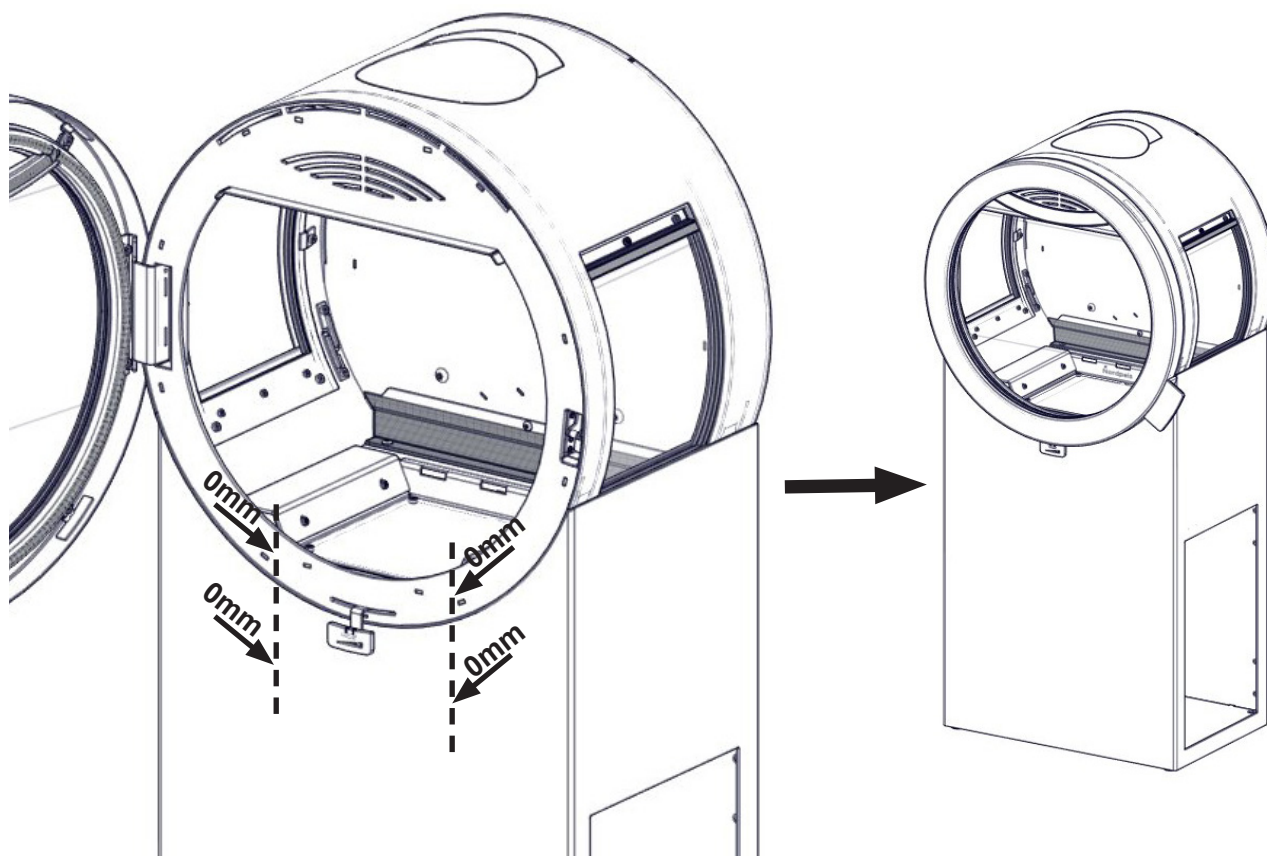


FIG 9a



- (NO)** Monter Thermotteplatene i motsatt rekkefølge de ble tatt ut.
- (SE)** Sätt tillbaka thermotte-plattorna på samma sätt som de togs bort, men i omvänd ordningsföljd.
- (GB)** Re-install the thermotte plates in the reverse order as they were disassembled.
- (FI)** Asenna Thermotte-levyt päinvastaisessa järjestyksessä.
- (DE)** Bauen Sie die Thermotte-Platten in umgekehrter Ausbaureihenfolge wieder ein.
- (FR)** Remonter les plaques Thermotte dans l'ordre inverse du désassemblage.
- (DK)** Genmonter thermotte-pladerne i omvendt rækkefølge i forhold til afmonteringen.

FIG 10

Door assembling - optional

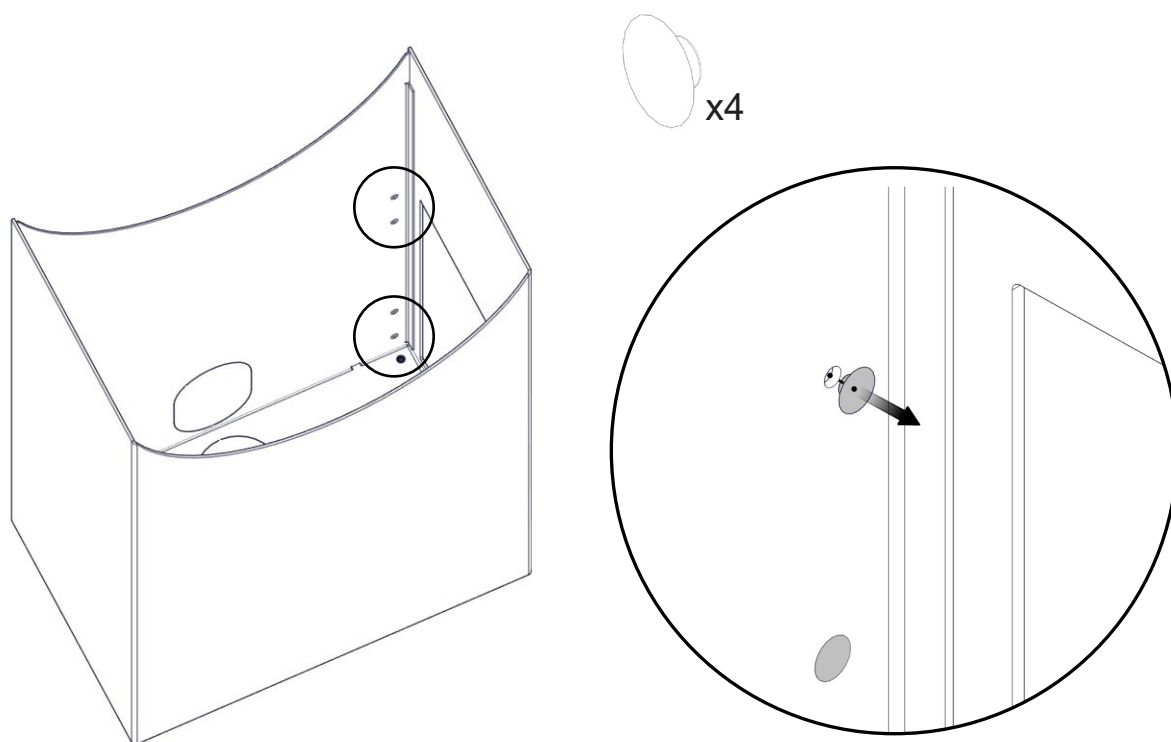


FIG 11

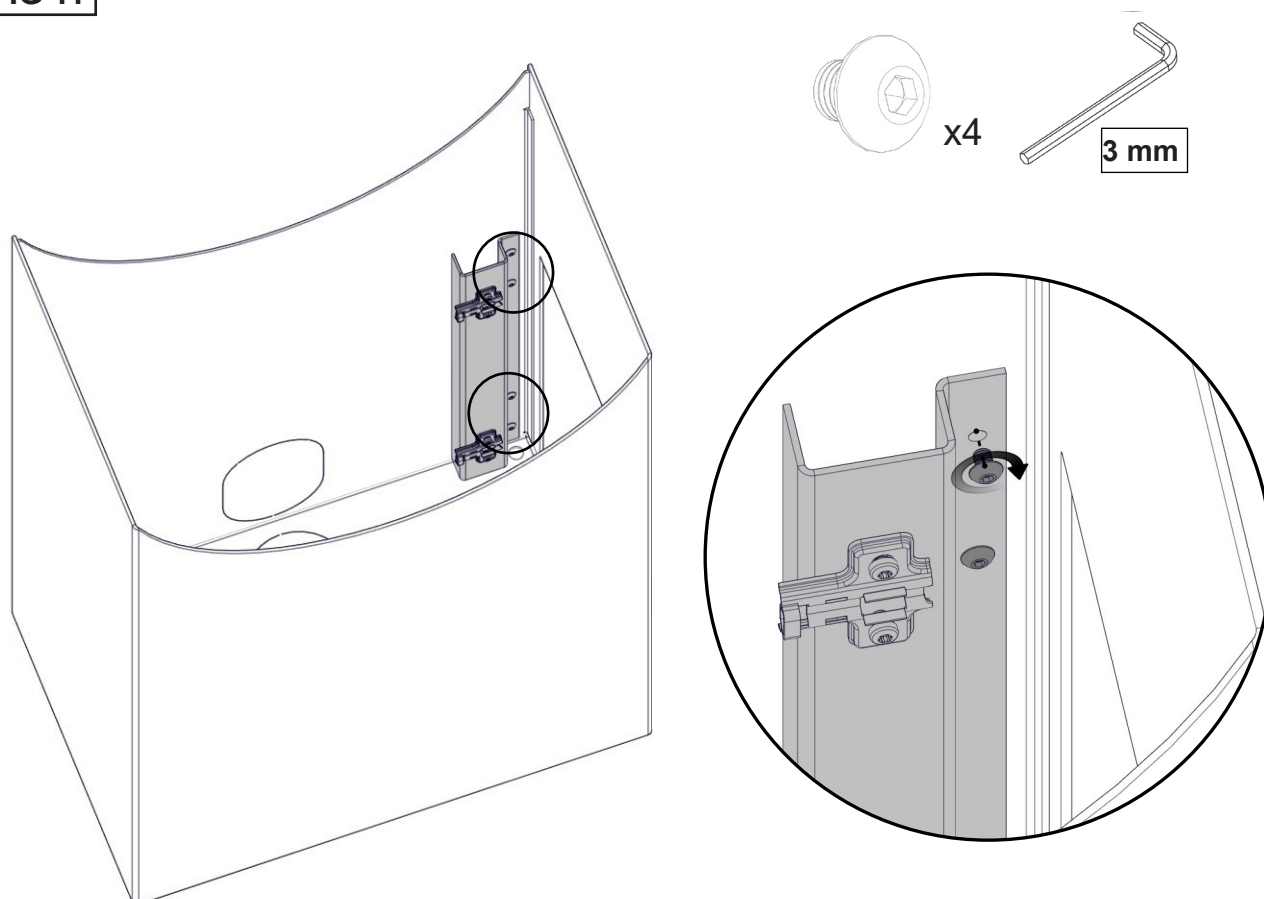
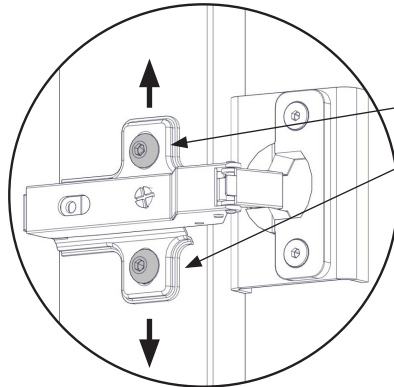
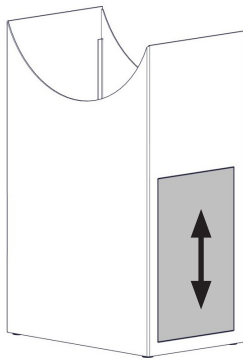
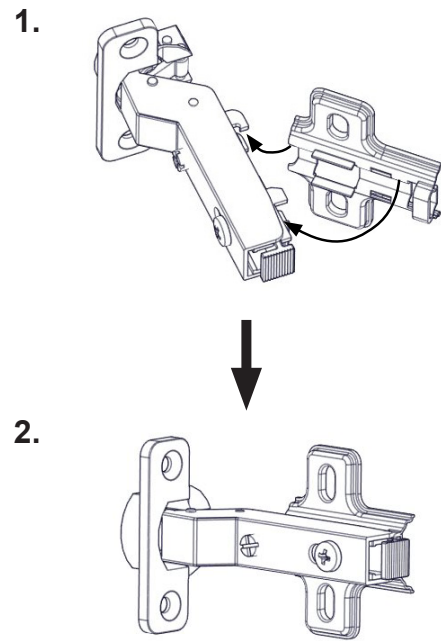
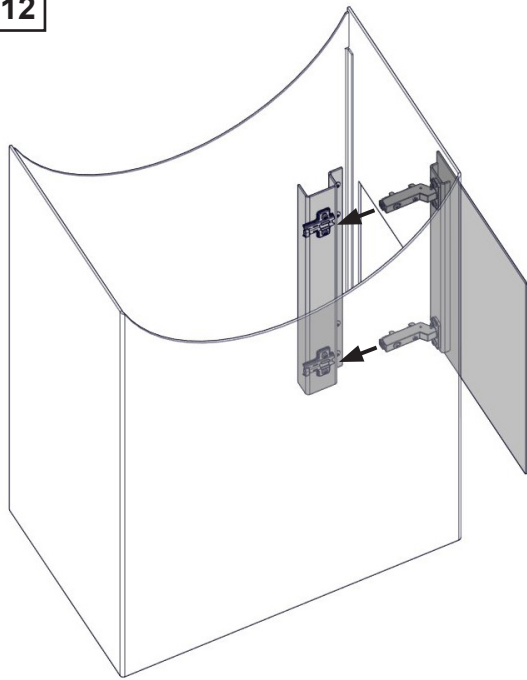
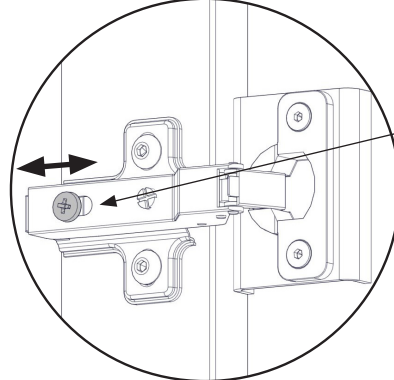
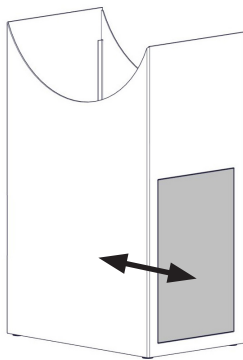


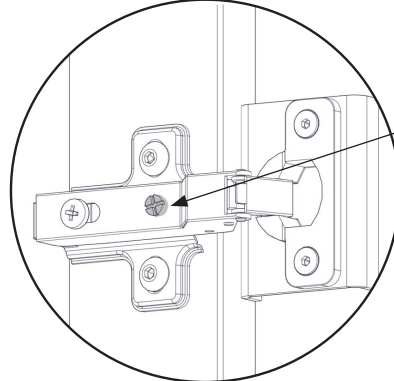
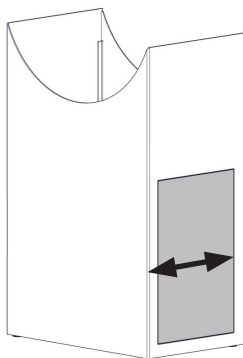
FIG 12



x4



x2



x2

FIG 13

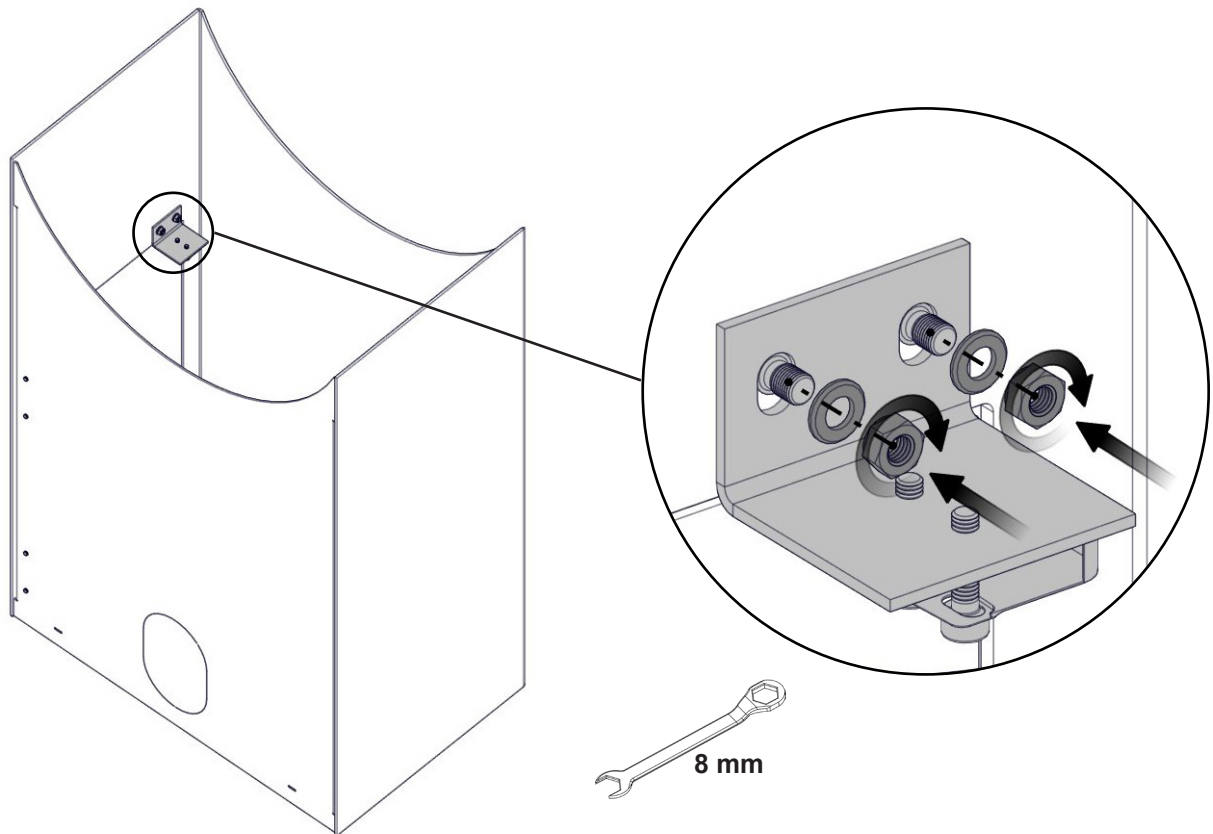
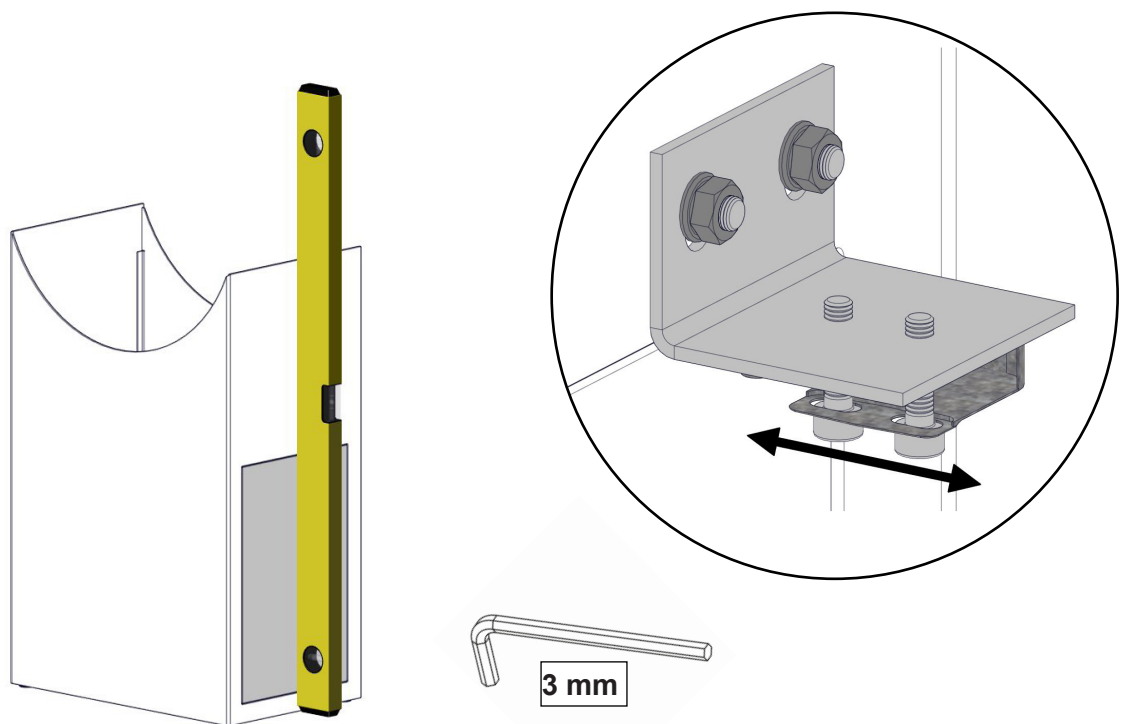
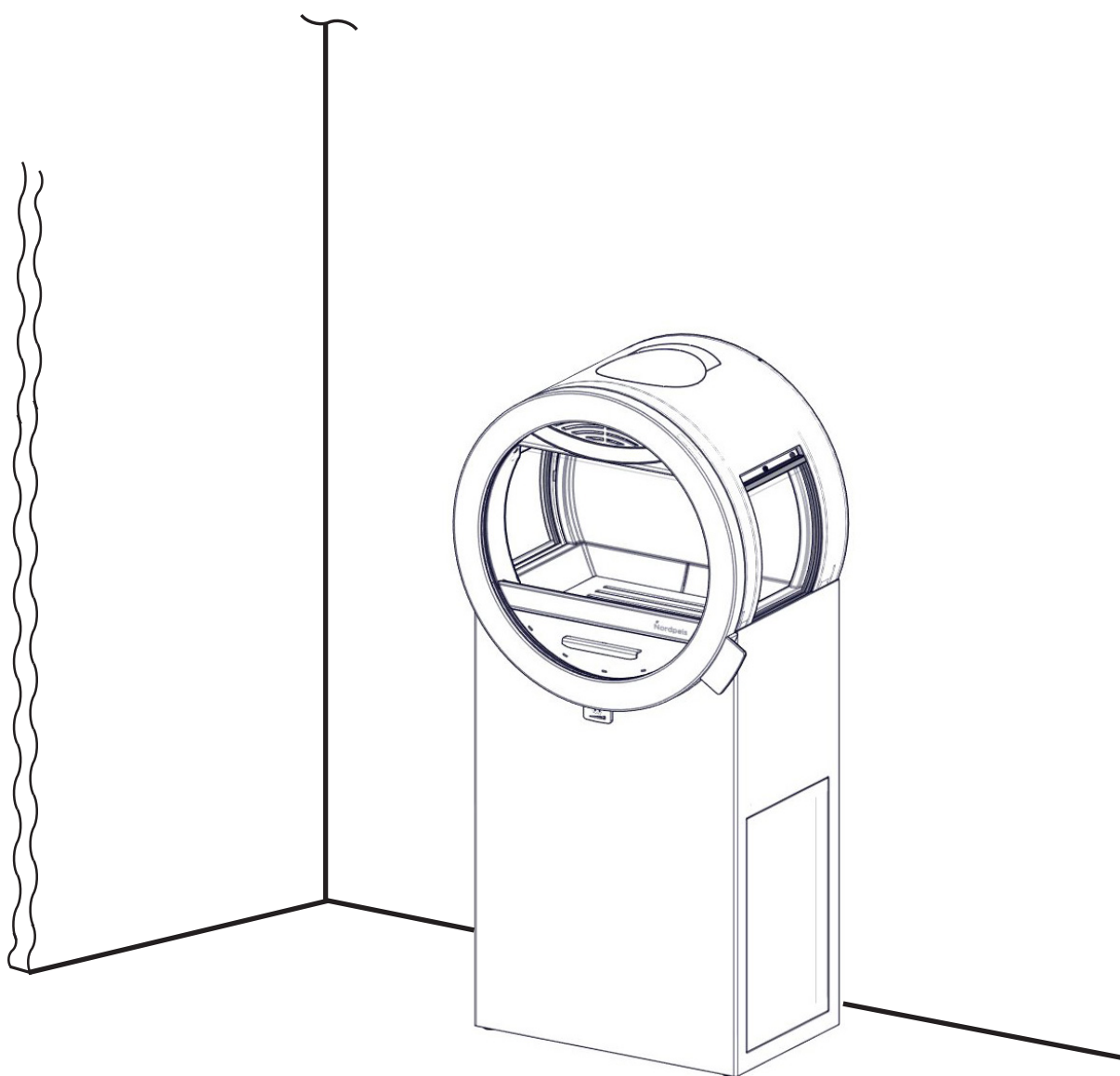


FIG 13a







Nordpeis AS, Gjellebekkstubben 11, N-3420 LIERSKOGEN, Norway
www.nordpeis.no